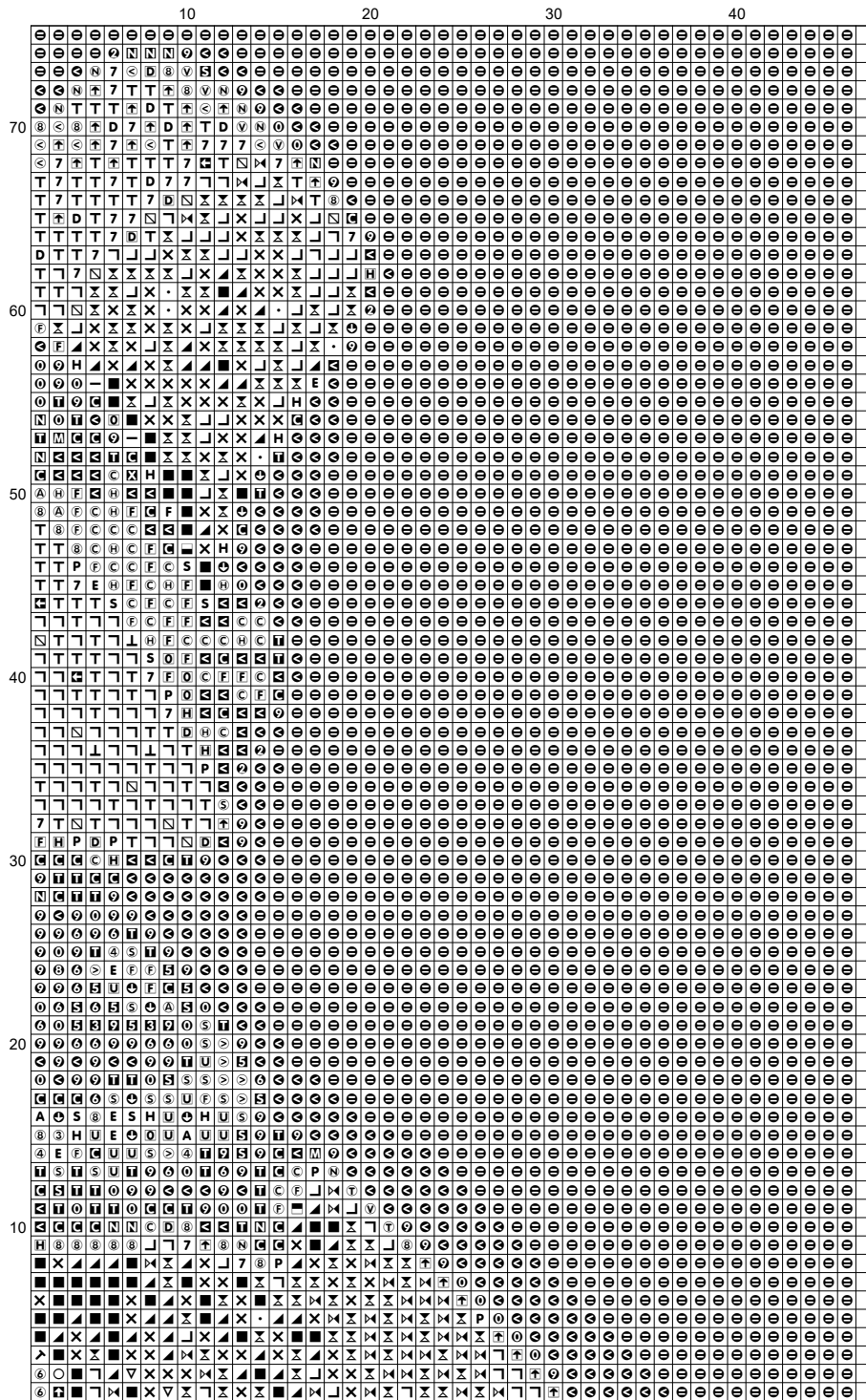
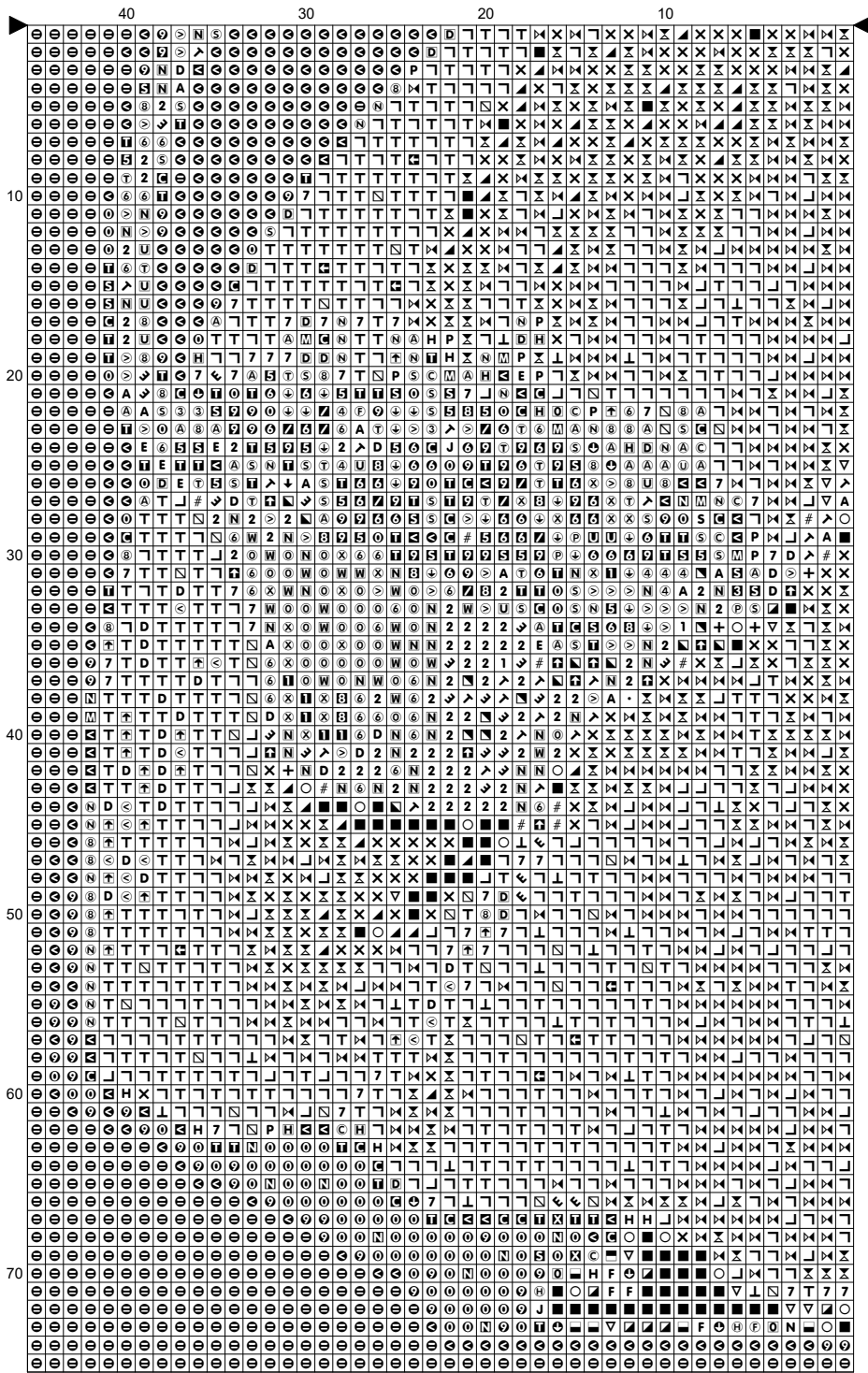


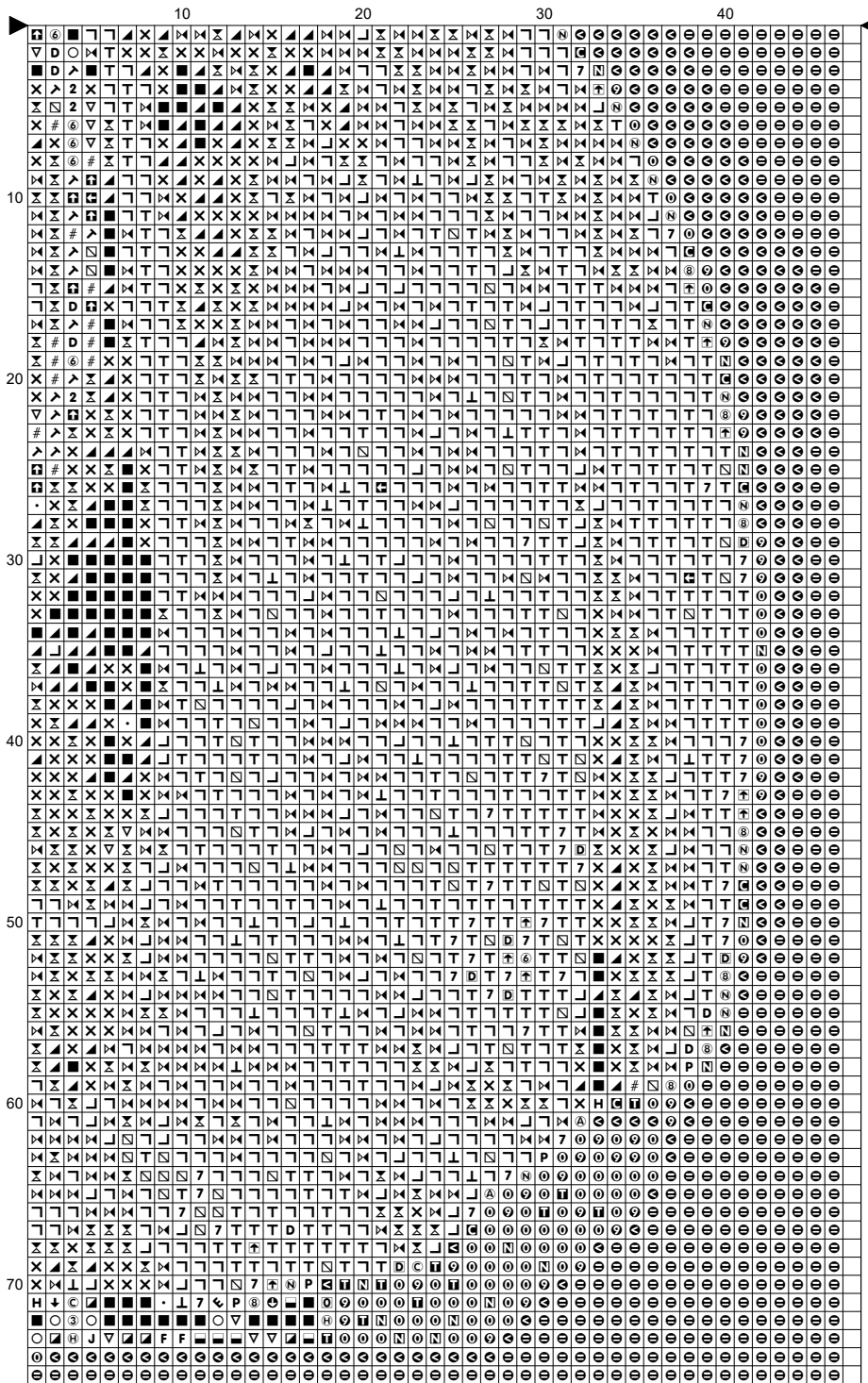
St. Patricks Day Green Ggirl in Bonnet



Design size: 6.50 x 10.71 inches or 16.51 x 27.21 cm







Instructions and Symbol Key for Design "St. Patricks Day Green Ggirl in Bonnet"

Fabric: 14 count Aida

Stitches: 91 x 150 **Size:** 6.50 x 10.71 inches or 16.51 x 27.21 cm

Colours: DMC

Use **2** strands of thread for cross stitch

Sym	No.	Colour Name	Sym	No.	Colour Name
■	310	Black	▲	890	Deep forest green
○	3371	Ebony	+	938	Espresso brown
▽	934	Algae green	×	895	Bottle green
#	936	Oaktree moss green	.	935	Undergrowth green
⌘	3345	Dark Hunter Green	⌘	904	Avocado green
—	3362	Fig tree green	└	937	Moss green
└	905	Parrot green	▣	898	Teak brown
▣	3021	Cliff grey	▣	829	Dark green bronze
▣	469	Dark moss green	▣	730	Khaki green
▣	580	Cactus green	▣	3051	Olive tree green
▣	3787	Wolf grey	↓	3011	Artichoke green
T	906	Apple green	└	3346	Hunter Green
↙	988	Forest green	↘	830	Green oak brown
↘	732	Bronze green	1	869	Coffee brown
2	831	Green bronze	7	470	Olive green
A	370	Medium mustard	D	581	Grashopper green
E	3012	Marsh green	F	645	Dark steel grey
H	3363	Herb green	J	640	Green grey
N	646	Platinum grey	P	3347	Insect green
S	3052	Silver green	⊙	3022	Elephant grey
⊙	522	Trellis green	↑	704	Lime green
⊙	989	Fennel green	⊙	647	Rock grey
H	3364	Sage green		832	Light green bronze
U	371	Green plains	W	680	Dark old gold
⊙	3852	Mustard yellow	③	642	Earth grey
④	3828	Oaktree brown	⑤	3778	Light terracotta
⑥	733	Golden green	⑧	471	Tarragon green
⊙	907	Granny Smith green	⊙	833	Brass
⊙	834	Light brass	⊙	3053	Tweed green
⊙	523	Ash green	⊙	3032	Dark antique silver
⊙	3023	Light platinum grey	⊙	3348	Lettuce heart green
⊙	422	Light oak	⊙	613	Rope brown
⊙	734	Light Olive green	⊙	3013	Resin green
⊙	472	Bud green	⊙	3820	Maze yellow
⊙	3821	Straw yellow	⊙	437	Camel
⊙	3046	Rye beige	⊙	676	Savannah gold
⊙	3819	Light moss green	⊙	165	Pale moss green
⊙	3822	Light straw yellow	⊙	524	Light grey green
⊙	644	Light green grey	⊙	3024	Pale steel grey
⊙	369	Bamboo leaf green	⊙	3047	Silver birch beige
⊙	3033	Antique silver	⊙	945	Eggshell cream
⊙	3072	Pale pearl grey	⊙	822	Cotton cream
⊙	3866	Garlic cream	⊙	677	Sand gold



3078 Pale yellow
712 Cream



ECRUT ECRUT
BLANC BLANC

This chart has been designed and printed with our best intentions of being without mistakes. However, the possibility of human error, printing mistakes or the variation of individual stitching does exist, and we regret that we cannot be responsible for this.

Produced using Cross Stitch Professional for Windows www.dpssoftware.co.uk
Copyright © Followthemoonart.com 2020 All rights reserved.

